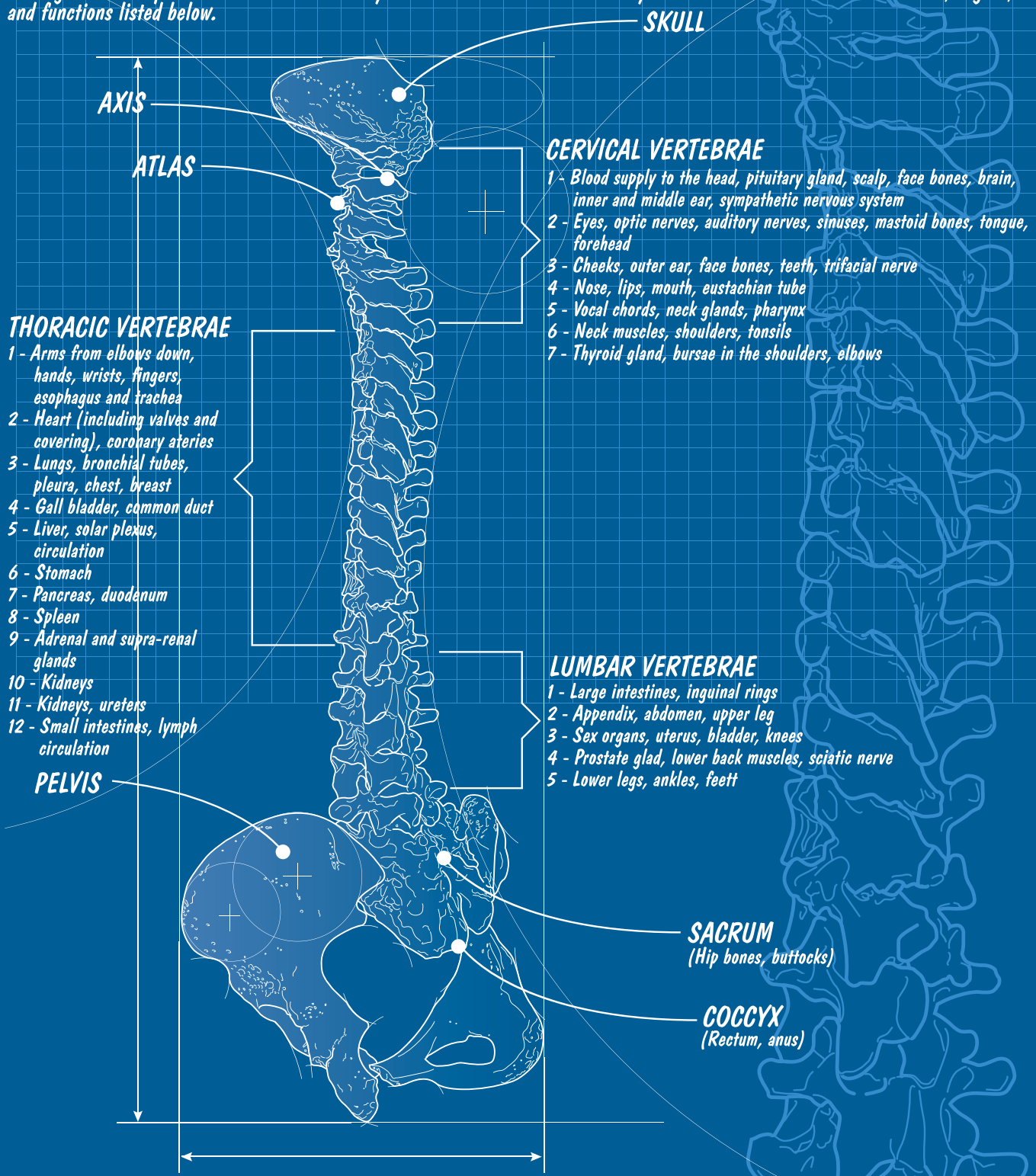


The Spine & Nervous System

The nervous system controls and coordinates all organs and structures of the human body. - Gray's Anatomy, 29th Ed., pg 4.
 Misalignments of spinal vertebrae and discs may cause irritation to the nervous system which could affect the structures, organs, and functions listed below.



- SKULL**
- CERVICAL VERTEBRAE**
- 1 - Blood supply to the head, pituitary gland, scalp, face bones, brain, inner and middle ear, sympathetic nervous system
 - 2 - Eyes, optic nerves, auditory nerves, sinuses, mastoid bones, tongue, forehead
 - 3 - Cheeks, outer ear, face bones, teeth, trifacial nerve
 - 4 - Nose, lips, mouth, eustachian tube
 - 5 - Vocal chords, neck glands, pharynx
 - 6 - Neck muscles, shoulders, tonsils
 - 7 - Thyroid gland, bursae in the shoulders, elbows

- THORACIC VERTEBRAE**
- 1 - Arms from elbows down, hands, wrists, fingers, esophagus and trachea
 - 2 - Heart (including valves and covering), coronary arteries
 - 3 - Lungs, bronchial tubes, pleura, chest, breast
 - 4 - Gall bladder, common duct
 - 5 - Liver, solar plexus, circulation
 - 6 - Stomach
 - 7 - Pancreas, duodenum
 - 8 - Spleen
 - 9 - Adrenal and supra-renal glands
 - 10 - Kidneys
 - 11 - Kidneys, ureters
 - 12 - Small intestines, lymph circulation

- LUMBAR VERTEBRAE**
- 1 - Large intestines, inguinal rings
 - 2 - Appendix, abdomen, upper leg
 - 3 - Sex organs, uterus, bladder, knees
 - 4 - Prostate gland, lower back muscles, sciatic nerve
 - 5 - Lower legs, ankles, feet

SACRUM
 (Hip bones, buttocks)

COCCYX
 (Rectum, anus)

NO. 30078000

THE HUMAN SPINE



ph. 503.646.3393
 f. 503.672.7042
 13321-NW Cornell Road
 Portland, Oregon 97229
 www.cedarmillchiro.com
 lmccabe@cedarmillchiro.com